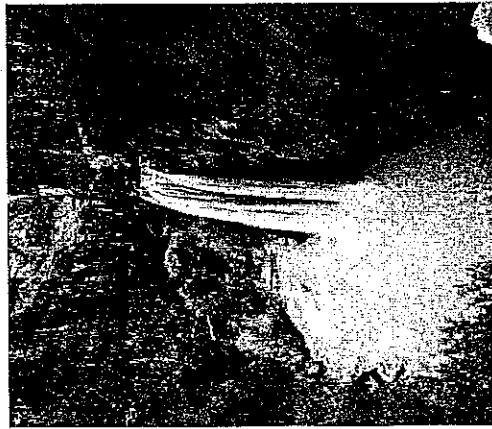
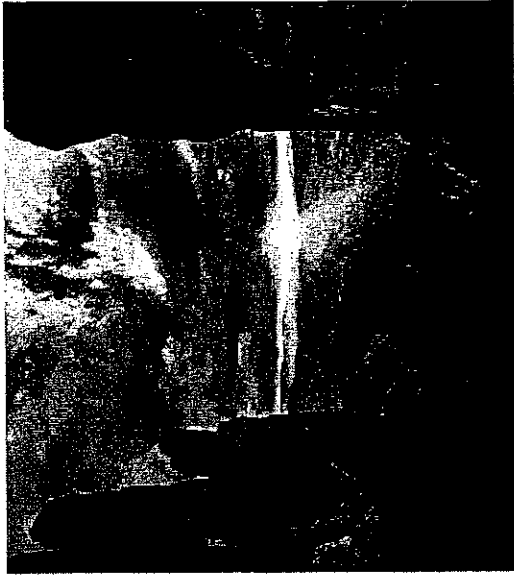


The Carlsbad Caverns
in New Mexico. The
Space Center in Texas.
The Grand Canyon in
Arizona.



<http://www.americandrivingvacations.com/trips/southwesterndesertvacation/southwesterndesertvacation.html>
<http://america.vacationxtravel.com/grand-canyon-arizona/>
https://c2.staticflickr.com/4/3699/14237863126_4d08916c6f_z.jpg
http://farm6.staticflickr.com/5538/14071935650_7bbfe25c31_o.jpg
<http://education.seattlepi.com/DM-Resize/photos.demandstudios.com/getty/article/110/99/87451714.jpg?w=600&h=600&keepratio=1&webp=1>
The Southwest by: Thomas and Virginia Aylesworth.
www.infoplease.com
www.eduplace.com
www.roadsideamerica.com
www.attractionsofamerica.com
www.cliffdwellingsmuseum.com
<http://lifeinalmostmexico.blogspot.com/2012/09/a-hike-in-new-mexican-desert.html>

Southwest Region

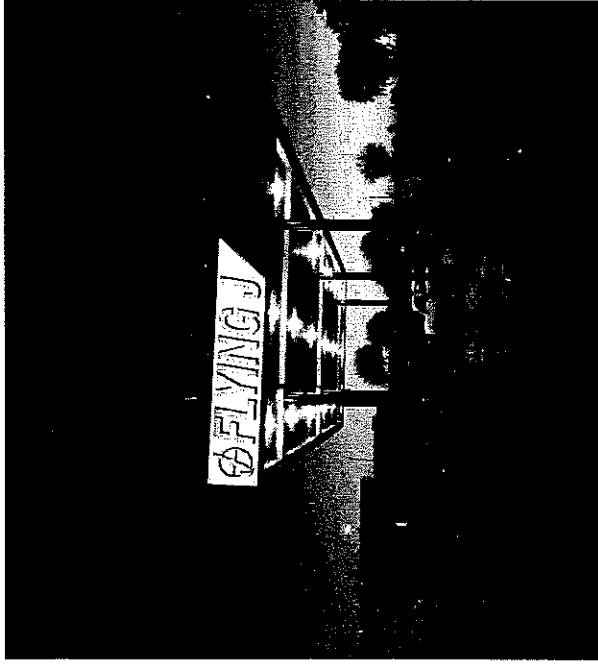


Parts of the
Southwest once
belonged to
Mexico.

The states in the Southwest are Arizona, New Mexico, Oklahoma, and Texas.



The climate of the Southwest is mostly arid.



Fuel is one product from the Southwest.

Canyon De Chelly National Monument in New Mexico. Petrified Forest National Park in Arizona. Enchanted Rock Natural Area in Texas. Wichita.

One attraction in Arizona is the painted desert.

One attraction in New Mexico is Teako's Giants of hatch.

One attraction in Texas is the Alamo museum.

One attraction in Oklahoma is the Western Heritage museum.

